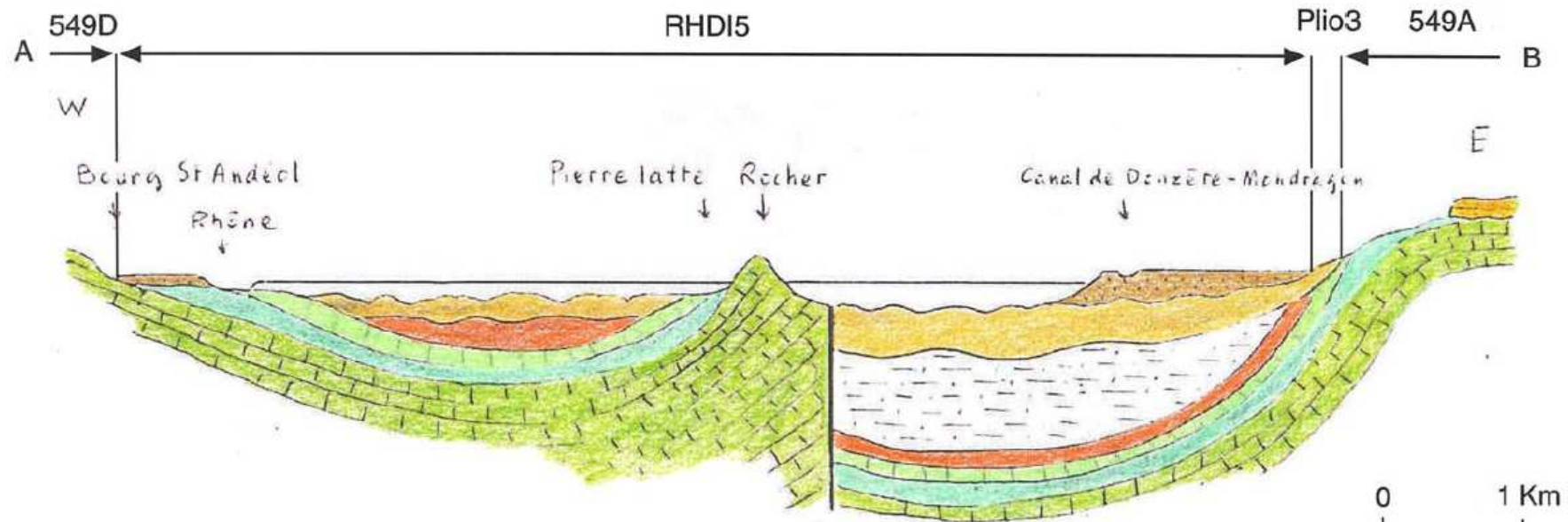
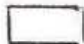








# Coupe N°273



- |   |                             |   |                                 |
|---|-----------------------------|---|---------------------------------|
|    | alluvions récentes          |    | c1 sables gresco-marneux Albien |
|  | alluvions anciennes         |  | n6 marnes Aptien sup.           |
|  | P marnes bleues Plaisancien |  | n5 grès calcaires Aptien inf.   |
|  | série de Pierrelatte        |  | n4u calcaires Urgonien          |
|  | m1 molasse Burdigalien      |   |                                 |

Extrait du rapport HG-26-0736 de R. Michel(1980)